



97 Fordbridge Road, Ashford, TW15 3RY

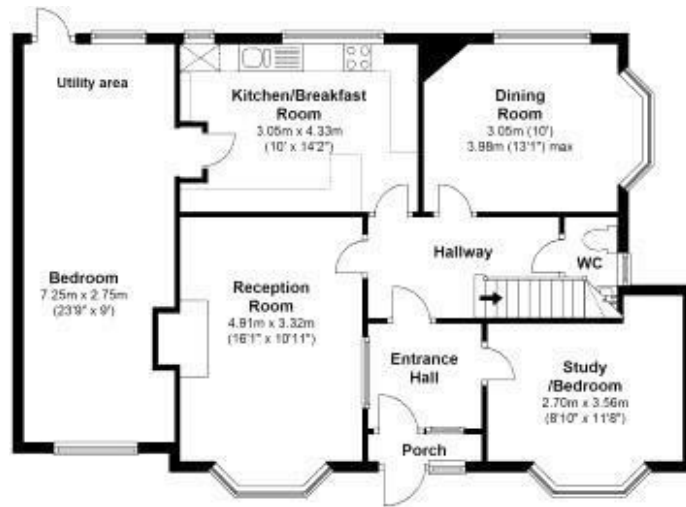
£685,000

97 Fordbridge Road, Ashford, TW15 3RY

An extended four bedroom three reception room detached family residence situated in a highly regarded location. The property benefits from versatile and flexible accommodation with a large family kitchen, cloakroom, modern white three piece family bathroom with garage and off street parking. Offered for sale with NO ONWARD CHAIN.



Floor Plan



Ground Floor

GROSS FLOOR AREA approx. = 1,452 Sq Feet (134.90 sq.metres)

Copyright: aspenresidential.com



First Floor



Features

- Detached Family Residence
- Large Corner Plot
- Extended Accommodation
- No Onward Chain
- Three Reception Rooms
- Sought After Location
- Garage And Ample Off street Parking
- Four Large Bedrooms

